



# ST. GABRIEL - RE- ENGAGED FOR LEARNING

St. Gabriel the Archangel Pandemic Plans



## MISSION

St. Gabriel the Archangel School seeks to provide excellence in elementary education (K-8). As part of St. Gabriel the Archangel Parish, we strive to enrich our students spiritually and academically so they will be, like our patron saint, messengers of the Good News wherever they go.

Although we are still navigating the pandemic, St. Gabriel holds true to our mission - that our students will continue to grow as Messengers of Christ.

We are committed to developing the whole child academically, spiritually, physically, and social-emotionally throughout the pandemic and beyond.

Due to the unpredictable nature of the COVID -19 Pandemic, this document may change to provide additional guidance and recommendations.

**Introduction**    **3**

**Health and Safety**        **4**

**Cleaning and Disinfection**        **4**

**Screening and Exclusion Protocols**    **4**

**Nurse Algorithm**            **5**

**Masking**            **6**

**Universal Masking:**            **6**

**Appropriate Facial Masks:**        **7**

**Face Shields:**            **7**

**Those with difficulty with wearing masks and/or disruptive behavior:**        **7**

**Entrance and Exit Protocol**    **7**

**Arrival**            **7**

**Dismissal**        **9**

**Walkers and Bike Riders:**        **9**

**Car Riders**            **10**

**Aftercare**            **11**

**Crossing Guards**            **11**

**Lunch Service**    **12**

**Use of Space**    **12**

**Nut Free Policy**        **13**

**What does this mean for me?**    **13**

**Restricted Visitors and Volunteers**    **14**

**Responsive Learning**    **14**

**Starting Plan for Week of August 17, 2020**    **14**

**Live Stream**        **17**

**Kindergarten through 2nd grade -**        **18**

**3rd - 5th Grade -**    **18**

**Middle School -**    **18**

**Changing Plans**        **18**

**Pandemic Related School Supplies for Every Student:**        **18**

**Every Child Everyday**    **19**

**Well Rounded**    **19**

**Faith Formation**      **19**

**Closing the Learning Gap**      **19**

**Beyond the Bell**      **19**

**Aftercare**      **19**

**Technology**      **19**

**Digital Platforms**      **20**

**Appendix A**      **22**

**Appendix B**      **22**

In preparation for St. Gabriel the Archangel's reopening in August, administrators have met throughout the summer, surveyed parents, consulted with teachers and various stakeholders, including medical professionals, to plan how school could ensure safety for students, staff and families; provide the best possible learning environment in our building, and offer solid academics for all.

Our desire is to have school with students physically present in the buildings this year with proper health and safety measures taken. The importance of in-person learning cannot be overstated, nor can the negative effects and inequities stemming from school closures. As always, safety remains our top priority when it comes to students and our staff. **The American Academy of Pediatrics (AAP) "strongly advocates that all policy considerations for the coming school year should start with a goal of having students physically present in school" ([Link to article](#)).** Children need to go back to school for several important reasons directly related to general well being, as well as the fact that they are "less likely to become infected and to spread infection."

While our aim is to open our school, we made our plan flexible, so that it could be adapted for movement between full-time in-person learning, and modified full-time live streaming, based on factors such as confirmed cases of COVID-19 within the school or St. Louis City area.

Our plan is aligned with guidance from the federal Centers for Disease Control, state Department of Elementary and Secondary Education and the St. Louis City Department of Public Health to provide a framework for the 2020-2021 school year.

This plan includes information on:

- Our plan for the 2020-2021 school year
- Focus areas of healthy school environments, students, staff and learning
- Frequently Asked Questions

We want nothing more than to have our students and staff return in the fall. We have prepared for this year's challenges and look forward to a great 2020-2021 school year.

# Health and Safety

## Cleaning and Disinfection



In alignment with public health recommendations, St. Gabriel the Archangel will take measures to prevent community spread of COVID-19, including enhanced cleaning and disinfection procedures. The recommendations are based on the City of St. Louis Department of Health, Center for Disease Control and Prevention (CDC), American Academy of Pediatrics (AAP), World Health Organization (WHO).

St. Gabriel the Archangel is doing its very best to reduce the risk of exposure to COVID-19 by cleaning and disinfecting campus on a regular basis. We have made every effort to secure the proper cleaning and disinfecting products to keep our school safe and clean this school year.

We will routinely clean and disinfect shared spaces and high-touch surfaces.

We will have the following procedures in place

- Maintenance and custodial staff will clean and disinfect door handles, handrails, and other high touch surface areas throughout the day and after all students have left the building.
- Touchless faucets and toilets have been ordered to help reduce germs on high touch areas.
- Teachers and office staff will help clean and disinfect phones, copiers, and other technology that might be shared throughout the day.
- We will clean and disinfect restrooms with increased frequency. Additional hand washing stations will be staggered throughout the building to help students using the restroom.
- We will follow established protocols for cleaning and disinfection of shared spaces and surfaces to be performed by maintenance and custodial staff each day.
- We will minimize soft furnishings, floor coverings (e.g. rugs), and surface clutter in order to facilitate proper disinfection.
- We will use disinfectant products that are approved by the U.S. Environmental Protection Agency (EPA) for effective use against SARS-CoV-2, the virus that causes COVID-19.



We will implement protocols for building operations to reduce potential exposure to COVID-19

- We will minimize the sharing of technology learning materials.
- We will establish a quarantine room to care for symptomatic students until they are picked up.
- We will require all students, staff, and visitors to wear a mask while in the building.
- We will utilize as much outdoor space as we can during the school year.

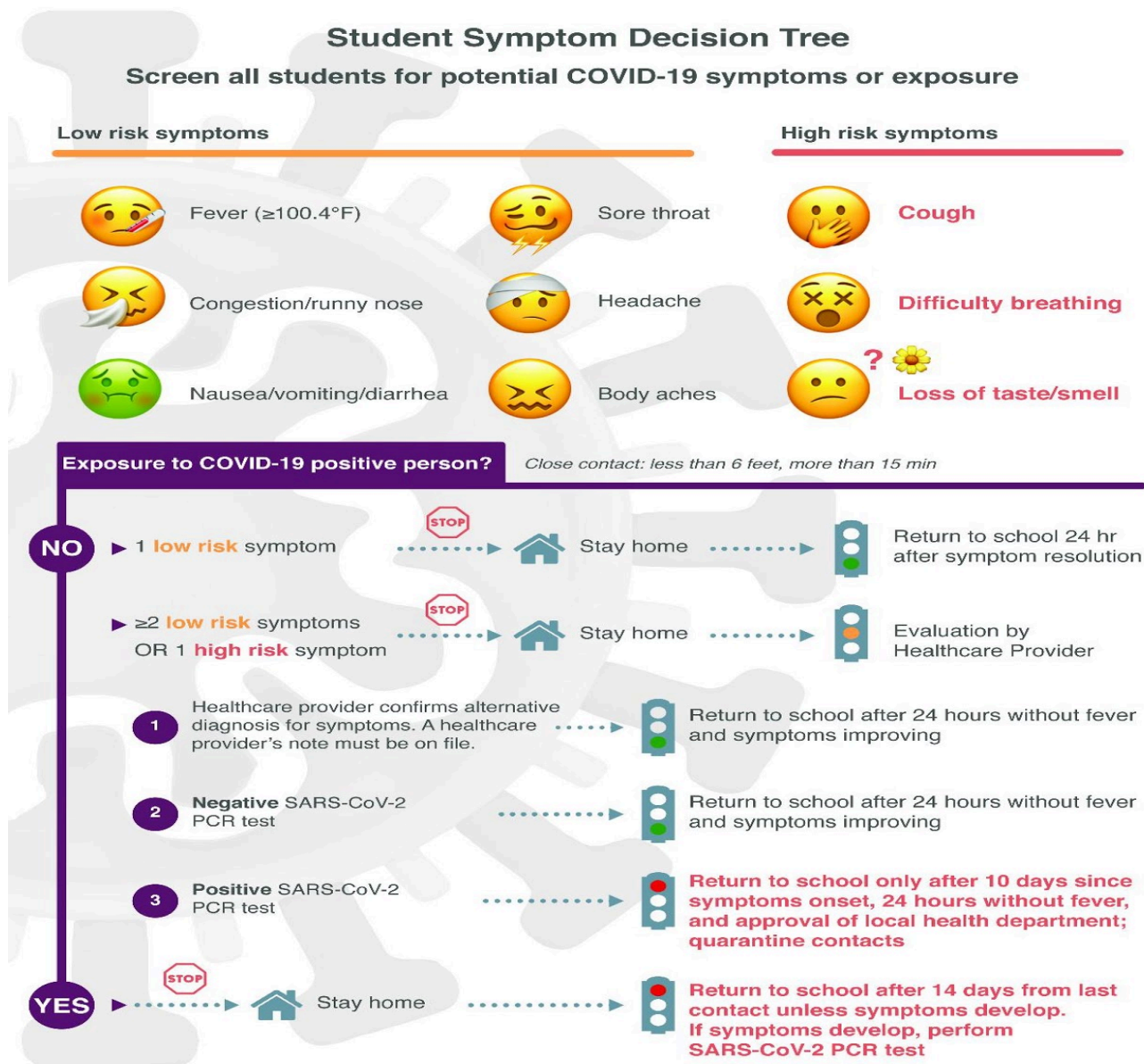
## Screening and Exclusion Protocols

St. Gabriel the Archangel has partnered with our new gradebook system, TeacherEase, to promote healthy students in our building each day. Parents will have a notification every morning to screen their child for symptoms and to conduct a temperature check. More information from TeacherEase, visuals, and training are coming as it is being implemented in their system. There will also be random screenings of students/classes throughout the day. Staff will also self-check and follow appropriate procedures and protocols before entering the building each day.

## Nurse Algorithm

The following two pictures are flow charts that Nurse Ciegel and school staff will use to manage individual cases as they arise. These flow charts were developed by Pediatric Infectious Disease specialists from St. Louis Children's Hospital. This has been reviewed and supported by the STL City and County Health Departments. This flowchart is subject to change in accordance with health and safety guidelines.

The image below was updated on 8/27/2020





# Protocol for Schools Assisting Health Department in Close Contact Identification for COVID-19 Cases among Students

School notified by family or Health Department about student with **positive** test for novel coronavirus

**Positive student\* AND household contacts\*\*** immediately excluded from school until approved by the Health Department for return to school.

Contacts identified: Students with close contact with the **positive** student:

- During the student's infectious period (48 hours before and for 10 days after symptoms developed)
- Within 6 feet
- Contact >15 minutes

Classroom contacts seated within 6 feet in the front, side, and back of student

Lunch contacts within 6 feet for > 15 minutes

Free period contacts within 6 feet for > 15 minutes

Transportation contacts within 6 feet for > 15 minutes

Sports team or extracurricular contacts within 6 feet for > 15 minutes

Provide list of students and staff who are possible close contacts of positive case to the Health Department:

- Student/staff name and date of birth
- For students, parent(s) name and phone number
- Home address
- Face covering usage\*\*\*

**Positive** student information including class name(s), date of last attendance, and information as above.

Health Department will determine which students should be quarantined and excluded from school.\*\*

\*\*\***Face covering** usage may be considered for those students who can reliably be expected to wear and report compliance with mask usage.

\*Students with a positive test will be isolated and should not come to school until no fever for  $\geq 24$  hours (without fever-reducing medication) AND symptoms improving AND approved by the local health department to return to school (typically 10-14 days from start of symptoms). For St. Louis City, patients must also be released by primary care provider.

\*\*Students who are determined to be close contacts will be quarantined and should not come to school until at least 14 days after last potential exposure AND approved by the local Health Department for return to school.

Health Department	Phone
St. Louis County case reporting ( <a href="mailto:cdcs.doh@stlouisco.com">cdcs.doh@stlouisco.com</a> )	314-615-2660
St. Louis County provider question ( <a href="mailto:provider-COVID@stlouisco.com">provider-COVID@stlouisco.com</a> )	
St. Louis County school nurse liaison ( <a href="mailto:School-COVID@stlouis.com">School-COVID@stlouis.com</a> )	
St. Louis City	314-657-1499
St. Louis City school reporting ( <a href="mailto:casereporting@stlouis-mo.gov">casereporting@stlouis-mo.gov</a> )	314-657-1453
St. Charles County	636-949-1899
Missouri Department of Health	877-435-8411
Illinois Department of Health	800-889-3931

Prepared by Rachel Orscheln, revised- 8/3/2020

The document above was updated on 8/7/2020

As mentioned in the Nurse News video distributed on 8-11-2020, the St. Gabriel Pandemic Committee recommends that if a positive case of COVID-19 is in the classroom, the entire class quarantines for 14 days out of an abundance of caution. The goal of this is to hit the "re-set" button and prevent multiple, consecutive quarantine episodes. The Health Department will give individual guidance on each student's instruction for quarantine at home.

# Masking

## Universal Masking:

For individuals 2 years of age and older, the CDC recommends wearing cloth facial coverings/masks indoors in public settings and anytime a 6 foot social distance cannot be consistently maintained as an important public health strategy to reduce the spread of COVID-19. At St. Gabriel the Archangel school, we strive to optimize safety in our school community and classrooms under best available evidence and information. Given this, we will participate in universal masking as follows:



1. Students: All students are expected to wear facial masks while on school property. Time without masks (i.e. lunch, breaks, distanced outdoor activity, etc) will be scheduled throughout the day and will be given under the direct permission and supervision of school personnel only.
2. Staff: All staff are expected to wear facial masks while on school property. Exceptions to this include when eating/drinking, when in a closed room alone, and in circumstances necessary to deliver specific educational material where an adequate distance can be safely maintained. Teachers will be provided a face shield to wear when adequate distance can be safely maintained, but it does not replace a face mask when adequate distance cannot be maintained.
3. Visitors: All visitors and parents are expected to wear facial masks at all times while on school property. Exceptions are under the discretion of school personnel only. Individuals under the age of 2 yrs are exempt.

## Appropriate Facial Masks:

Facial masks should be made out of 2+ layer cloth and cover the mouth and nares of the nose completely ([How to Safely Wear a Mask](#)). Masks are not required to be a specific style, however they should sit securely on the face without need for adjustment. Fabric does not need to be a specific color or pattern, but masks should not have words or pictures that are distracting. Any wearing of insignia which conveys the image of gang membership, supports the beliefs of hate groups, makes sexual innuendos, or promotes drugs, alcohol, or tobacco is inappropriate for school and is not allowed. Appropriateness is otherwise under the discretion of the principal and pastor. Masks should be laundered after every use as per [CDC recommendations](#).

Parents should provide at least 2 extra masks in a labeled baggie with students while attending class. Please label all masks. Lanyards and other accessories to help students avoid misplacing masks are allowed.

## Face Shields:

Face shields and goggles are designed to provide eye protection, not nose and mouth protection. Face shields are allowed, but are not to be used in place of a mask.

Face shields are being provided for staff use.

## Those with difficulty with wearing masks and/or disruptive behavior:

St. Gabriel the Archangel School strives to provide a supportive and safe environment. As such, we feel that the best approach to encourage consistent mask wearing for all students should be supportive, not punitive. School personnel are available to help work with individuals to wear facial masks, and specific strategies will be designed on an individual basis as needed. Additionally, school staff will provide support and guidance to wearing masks to all students.

Please note, all above recommendations are subject to change under direction from the CDC, St. Louis City Public Health Department, Archdiocese of St. Louis, and other public health/governmental agencies at any time. ■



# Entrance and Exit Protocol

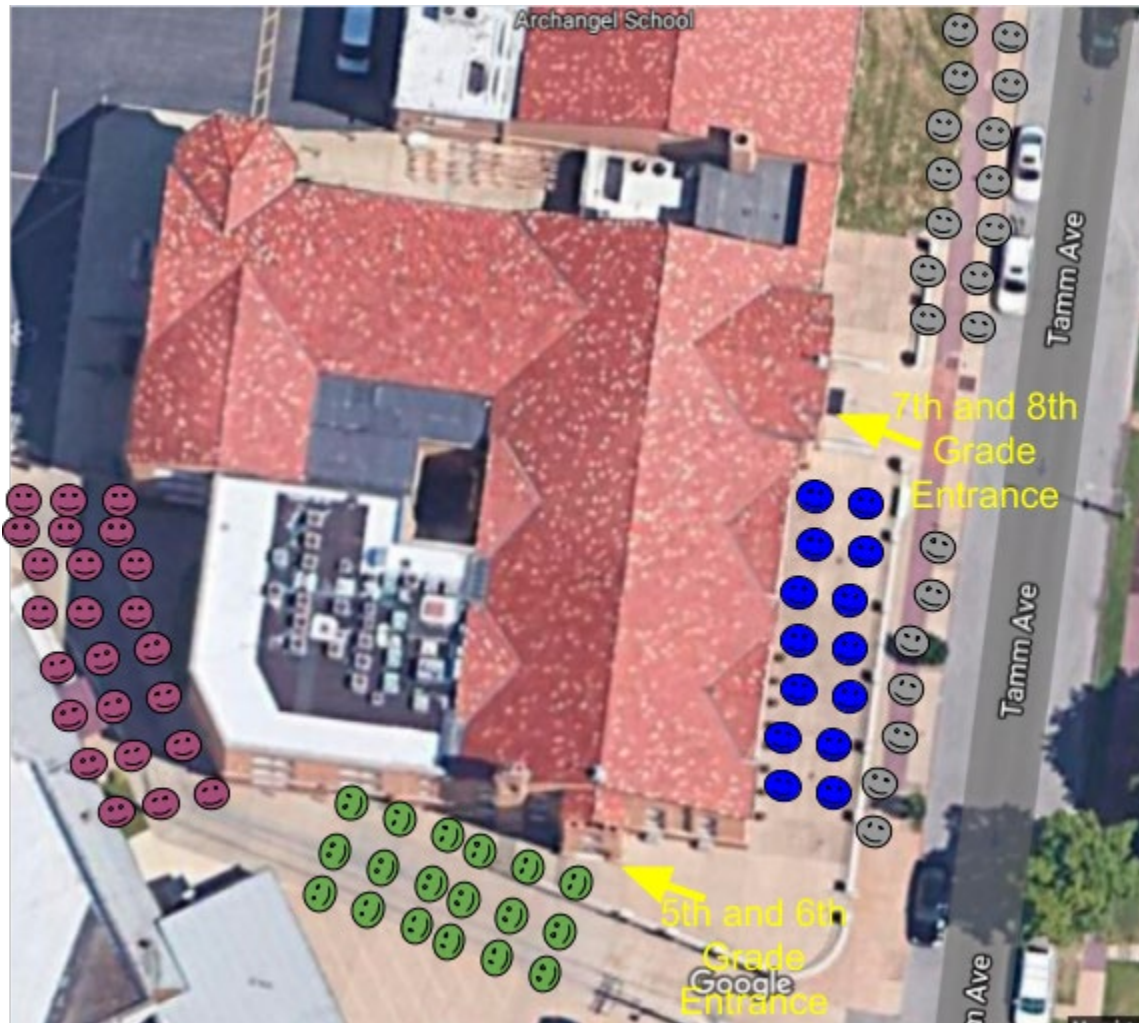
(Updated 8/14)

## Arrival

- Students should NOT arrive on school grounds before 7:25am as no staff will be on duty to supervise students.
- Students will need to wear masks as they enter campus and the entire time that they are waiting in their designated socially distanced spot.
- Older students dropping off siblings in grades K-4 will need to enter the parking lot on the Murdoch side by the gym entrance and then proceed to their designated area.
- Line up spots on the playground are designated on the map below. The color codes are as follows:
  - Sky Blue-7B
  - Orange- Kindergarten
  - Purple- 1st Grade
  - Lime (light) Green- 2nd Grade
  - Red- 3rd Grade
  - Aqua- 4th Grade



- Line up spots in the alley are designated on the map below. The color codes are as follows:
  - Forest (dark) Green- 5th Grade
  - Burgundy- 6th Grade
  - Sky Blue- 7th Grade
  - Gray- 8th Grade



- Homeroom teachers will meet their class outside at the designated entrance and escort them into the building.
- Please note that these plans will change due to inclement weather.

### Dismissal

- We will have separate procedures for students who are walking and those who are car riders.

### Walkers and Bike Riders:

- Students will be called to dismiss at 2:55pm. Only the students who are walking home or riding a bike/scooter will be dismissed at this time.
  - K-3 and 7B will dismiss out the same door as they enter
  - 4th, 5th, and 6th will dismiss out the meeting room doors (they should use the side steps near the alley and go down across the stage to the meeting room doors.
  - The remainder of 7th and 8th grade will go through the gym and out the gym doors.
  - Older students who are picking up siblings will need to go around to Murdoch to enter the parking lot and pick up from the younger siblings' teachers. They must then exit out of the

parking lot on the Murdoch side. They may not exit through the alley for safety reasons, to avoid the car pick-up line.

### Car Riders

- The students who are picked up by vehicle will be dismissed at 3:05. The students will line up by grade level on the parking lot similar to their arrival.
- The students will line up and wait for the teacher on duty to call for them. Parents will have ID tags in their vehicle to identify which students they are picking up. Staff will be stationed throughout the pick-up line and radio ahead to homeroom teachers what family is next in line to be picked up.
  - Orange- Kindergarten
  - Purple- 1st Grade
  - Lime Green (light)- 2nd Grade
  - Red- 3rd Grade
  - Aqua- 4th Grade
  - Forest Green (dark)- 5th Grade
  - Burgundy- 6th Grade
  - Sky Blue- 7th Grade
  - Gray- 8th Grade





- Students will be called to either Gate A or Gate B. See picture below:



Parents will turn into the alley off of Tamm Ave and pick up their child(ren) at either Gate A or Gate B. They will then continue down the alley to Childress.

### Aftercare

- Students attending aftercare will dismiss at 3:05 with the car riders. As the class makes their way outside, the aftercare students will split from the group and meet Sr. Ann Francis or other aftercare staff in the cafeteria.

### Crossing Guards

- There will be crossing guards stationed at the following corners (the number is how many teachers will be at that corner):
  - Tamm and Murdoch (1)
  - Childress and Alley (1)
  - Nottingham and Tamm (2)

## Lunch Service

Chris' pancakes will be able to offer a boxed lunch. The boxed lunch will be delivered to the classroom in a disposable container with disposable utensils. At the end of the meal, everything will be thrown away.

## Use of Space

St. Gabriel will utilize all available spaces indoors and outdoors to promote the safe physical distancing among classroom cohorts and across the school community.



Regarding hallways, we will:

- Establish traffic patterns using signage and floor markings to designate appropriate spacing and one-way traffic, when possible.
- Require use of personal water bottles or closed containers to prevent direct drinking from water fountains. Students and staff are encouraged to bring one from home. Please label with the owner's name.
- Use signage to promote handwashing and appropriate social distancing as recommended by public health officials.

Regarding classroom and learning spaces, we will:

- Position workspaces (e.g. desks, tables) and seating in compliance with recommendations by public health officials.
- Ensure classrooms have hand sanitizer and disinfecting materials.
- Prop open doors during entrance and exit times and close doors at all other times.
- Repurpose non-traditional learning spaces (e.g. cafeteria, outdoor spaces) and spaces traditionally reserved for "co-curriculars (Art, Music, and STEM) as needed and wherever feasible, to serve the learning needs of students in an environment that enables appropriate social distancing.
- Kindergarten will be moved to the North Wing where classroom space is larger. Co-Curricular teachers will move from classroom to classroom with needed supplies. This will enable students to remain in cohort groups and eliminate traffic in hallways.

Regarding cafeteria, we will:

- Repurpose cafeteria as needed.
- Arrange for students to consume meals in their classrooms.
- Stagger meal schedules (primary, elementary, middle school)
- Provide hand washing and sanitizing opportunities. In addition to the restrooms on each floor, we have additional hand washing stations that will be located throughout the building.
- Campus will be nut free (see nut free policy from the Pandemic Committee)
- A boxed lunch option will be available in a disposable container.

Regarding main office, we will:

- Prop open office door
- Require staff, students and visitors to use hand sanitizer upon entry and exit
- Position work stations in compliance with recommendations by public health officials.
- Use clear plastic shields in front of the reception desk.
- Use signage to promote handwashing and not touching main desks.
- Limit transaction time between office staff and students, other staff, and visitors.

Regarding restrooms, we will:

- Use signage to promote proper handwashing
- Limit and monitor the number of occupants at any given time based on the size of the bathroom.
- Mark the floor to accommodate waiting space that observes appropriate social distancing.

Regarding building entrances and exits, we will:

- Have staff at entries at the beginning of the day and at dismissal to ensure proper distancing, sanitizing and navigating of the school
- Designate and clearly label doors for various grade levels to enter and exit.
- Prop open doors during arrival and dismissal times and close doors at all other times
- Require sanitizing of hands upon entry and exit.

Regarding playgrounds

- Playground space will be used with structured cohort groups of children.
- Hands must be sanitized upon entry and exit of the building.
- The number of children on the playground will be limited and monitored based on the size of the space used.
- Areas besides the playground will be used for recess time such as the park and surrounding school and parish grounds as well as walks throughout the neighborhood.

## **Nut Free Policy**

St. Gabriel is committed to offering a safe and inclusive educational environment for all students, including students with food allergies. By working cooperatively with parents, students, and staff we hope to minimize the risks of accidental exposure to a food allergen while at school. Due to changes that must occur to maintain distance and cohorting relative to Covid-19, all meals will be eaten in the classroom for the 2020-2021 school year. This poses increased risk for our students with food allergies. Trace amounts of peanuts or tree nuts can cause an allergic reaction. Casual contact with peanuts or tree nuts, such as touching peanuts or peanut butter residue can cause an anaphylactic reaction in a child with a severe allergy. Because of this, St. Gabriel will become a “nut-free” school effective immediately.

### **What does this mean for me?**

All areas of the school will be a “peanut/tree nut-free zone.” Please do not send in any food items to be consumed in the classroom/school that contain peanuts, tree nuts, peanut butter, other nut butters, or peanut products. This includes almonds, filberts, Brazil nuts, cashews, hazelnuts, macadamia nuts, pecans, pine nuts, pistachios, and walnuts. Read labels carefully to make sure the products are nut free. This includes labels that read “May contain traces of peanuts/tree nuts”. Food labels and ingredients change over time, so always read the label each time before purchasing snacks.

Here is a link with a nut-free food guide to help assist you in keeping our entire student body safe:

<https://snacksafely.com/safe-snack-guide/>

Should food labeled as containing or may contain peanuts or tree nuts, inadvertently be brought to school, the food will be sent home unopened with a note indicating that the food item contains nuts and is not allowed at school. A limited amount of an alternative item may be available to the student, but should not be relied upon on a regular basis.

Despite the “nut-free” policy, the school makes no guarantee that the premises will be completely nut-free. Due to the risk of inadvertent exposure, it is important that parents of students with allergies continue to complete the mandatory Allergy Action Plan and return it and all necessary medications to the school nurse at the start of the school year.

## **Restricted Visitors and Volunteers**

Visitors will not be allowed in the school building. Only with the permission of Administration will essential visitors or visitors be admitted into the building. In the case that a visitor is admitted to the building, they are to wait inside the front doors, complete the standardized health assessment screening before being escorted by administration to the desired location. This includes parents picking up their children for COVID-19 and non-COVID-19 related pick-ups.



## Responsive Learning

### Starting Plan for Week of August 17, 2020

Based on current levels of COVID-19 in the St. Louis metro area, St. Gabriel the Archangel plans to begin school in the GREEN model. We will continue with the GREEN model as long as possible.

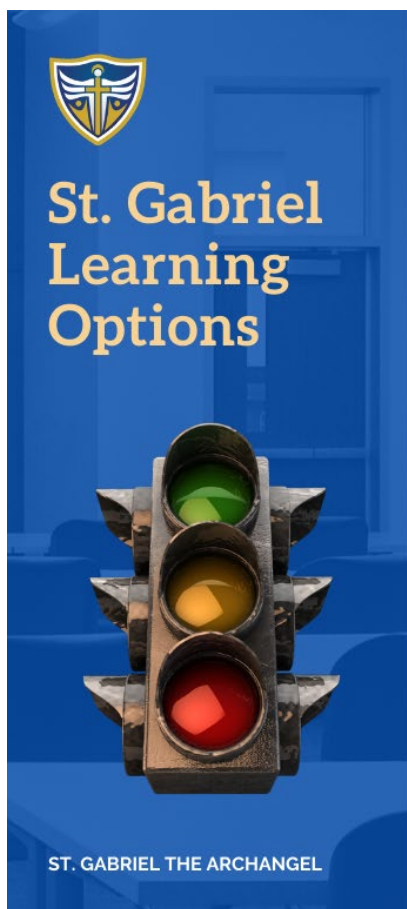
St. Gabriel will have a staggered start to the school year to help students transition back to school and understand new routines and procedures in place. It will also give them a shortened day to practice wearing their masks.

We will also be starting individual student assessments with students during this staggered start opening. It is important for us to assess students to know their learning needs as soon as possible. Students will sign-in at the front door, sanitize their hands, and then report to their classroom.

Parents are welcome to wait in their car or students are welcome to walk to campus for their appointment. The staggered start is as follows:

- **Monday August 17th- Kindergarten through 2nd grade ONLY - HALF DAY (Noon Dismissal)**
  - Middle school (grades 6-8) will be invited to meet teachers by appointment to get a head start on Benchmark Assessments. This is a reading assessment normally done at the beginning of the year. Instead of taking additional time out of instruction during the school year, students will begin meeting with teachers on these early dismissal dates. Some students will not need to meet during these early dismissal days, but will be accommodated during the regular school day.
- **Tuesday August 18th- Kindergarten through 5th grade ONLY- HALF DAY (Noon Dismissal)**
  - Intermediate students (grades 3-5) will be invited to assessment appointments in the afternoon since it is a half day for them.
  - Middle school (grades 6-8) will be invited to meet teachers by appointment to get a head start on Benchmark Assessments.
- **Wednesday August 19th- Kindergarten through 8th grade - HALF DAY (Noon Dismissal)**
  - Intermediate students and Middle school students will meet with teachers individually to work on Benchmark Assessments. Individual appointment times will be arranged with the teacher in the afternoon since all students will be learning in the morning.
- **Thursday August 20th- FULL DAY**
  - All students participate in a full day of learning
- **Friday August 21st- FULL DAY**
  - All students participate in a full day of learning.

St. Gabriel has developed a preliminary plan based on the current numbers in the St. Louis City area and the current guidelines that are in place. As the situation changes and St. Louis City guidelines change we may have to look at moving into YELLOW or RED. Those details are listed below.



## PRELIMINARY PLANS

### GREEN:

Students will attend school on campus with proper health and safety precautions in place or live stream from home (based on forthcoming parent commitment survey).

### YELLOW:

Younger grade levels (Kindergarten-5th Grade) will continue to attend regularly on campus (or live stream) with older students (Grades 6th-8th) learning at home.

### RED:

All students will be learning from home.

TRANSITION BETWEEN GREEN, YELLOW, OR RED WILL BE BASED UPON ST. LOUIS CITY COVID NUMBERS, GUIDELINES, AND HEALTH CONCERNS IN OUR BUILDING.

**Green** represents a school being open five days a week with recommended safety precautions in place. (A live stream version is an option.) A survey is forthcoming for you to pick your choice. The choice of in-person vs. live stream from home in GREEN will be for one month at a time. This will allow teachers to effectively plan for those students, as well as keep consistency in the classroom and at home for families.

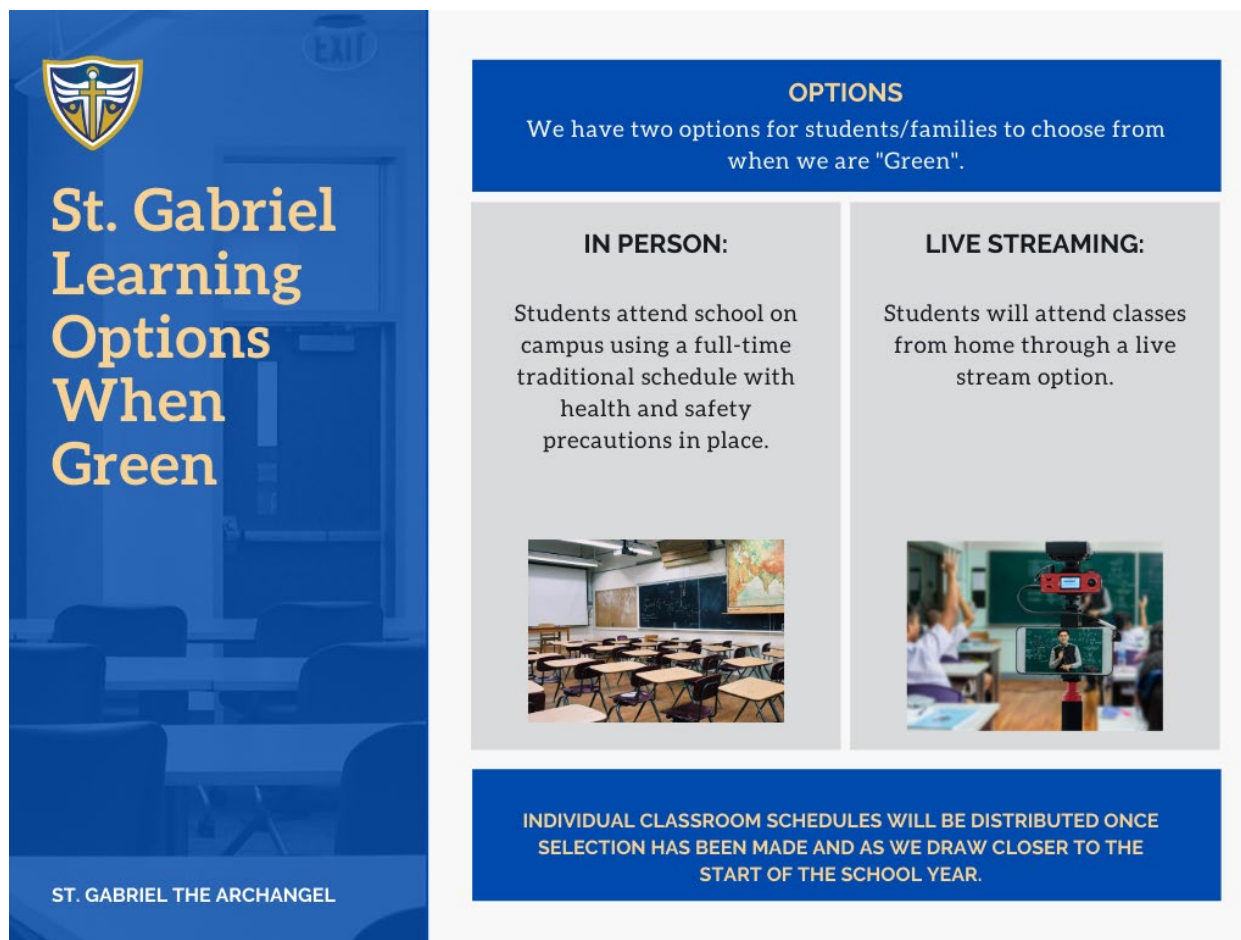
This **YELLOW** designation allows our school to reduce capacity in our building as directed by local authorities. In this scenario, older students will be learning at home due to their relatively higher risk of infection and transmission of COVID-19, compared to younger students. This also allows our younger students to continue in-person learning, which is ideal given the increased challenges of home learning for this age group. The definition of younger students are those in Kindergarten through 5th grade. The definition of older students are those in 6th through 8th grade.

- When our building is in YELLOW, our middle school students would follow a schedule provided by the school for when a student and class would meet synchronously with a teacher. The students would follow the schedule given for Monday thru Thursday, including co-curricular times. If the teacher is providing synchronous lessons, the student would be notified to ensure that they are online at the appropriate time. If a teacher is providing asynchronous lessons, the student would have that noted as well. The students should expect to have lessons and classwork given for the Monday thru Thursday classes from the core classroom teachers.
- The Friday schedule would be utilized as a flexible schedule day. The students would still be expected to be present but times could vary depending on the activities planned for that student. Students could have virtual House meetings scheduled, homeroom class meetings to aid in creating and maintaining a classroom community, enrichment or remedial help sessions scheduled with teachers, one-on-one meetings and conferences with students or parents (as needed), and also treated as a catch-up day for students. The expectation would still be that a student attends and completes work for their co-curricular class that is scheduled on Fridays. This flexible day allows teachers to collect data from the week and target instruction for students that may need more assistance on a topic before moving to a new week. This is also a way to help support students that are struggling with time management and schedules and work during the week and not have those students fall behind.

This finally ends with a **RED** designation meaning that learning from home needs to be a reality for everyone.

**Transition from green to yellow and yellow to red will be based on guidelines set forth from St. Louis City, the St. Louis City Health Department and the Archdiocese of St. Louis. "Yellow" is not a hard and fast designation. It is a way for us to reduce the number of students in the building should we be guided to do so based on recommendations by the above named entities.**

Families will have the choice between two learning options when in GREEN as depicted in the graphic below.



The graphic is a blue-themed poster for St. Gabriel Learning Options When Green. On the left, a vertical blue bar contains the St. Gabriel logo (a shield with a cross and wings) and the title "St. Gabriel Learning Options When Green" in large, bold, yellow and white text. Below the title, it says "ST. GABRIEL THE ARCHANGEL" in white. To the right, a white box with a blue header "OPTIONS" contains two columns of text. The "IN PERSON:" column describes attending school on campus with health and safety precautions, accompanied by a photo of a classroom. The "LIVE STREAMING:" column describes attending classes from home via live stream, accompanied by a photo of a student using a tablet. A blue footer box at the bottom states that individual classroom schedules will be distributed once selection has been made.

**ST. GABRIEL THE ARCHANGEL**

**OPTIONS**

We have two options for students/families to choose from when we are "Green".

**IN PERSON:**

Students attend school on campus using a full-time traditional schedule with health and safety precautions in place.

**LIVE STREAMING:**

Students will attend classes from home through a live stream option.

**INDIVIDUAL CLASSROOM SCHEDULES WILL BE DISTRIBUTED ONCE SELECTION HAS BEEN MADE AND AS WE DRAW CLOSER TO THE START OF THE SCHOOL YEAR.**

The In-Person mode of learning provides the most consistent way of learning for students. It is strongly recommended that students are learning in-person.

When we are in GREEN the Live Streaming option is offered to families who are seeking an alternative to regular in-person learning. **To help us fully prepare and make adjustments throughout the year, families will fill out a Google Form for each child as to the option they are going to do. This decision will be for a series of weeks (start of school will be at least 4 weeks).** The choice to attend in-person or live stream with each passing time period designation will be flexible and parents can change as situations arise.

You will be notified by school email, if circumstances are such that our situation is needing to move to yellow or red. We will also post on our website which color designation we are operating under.

## Live Stream

Live stream is a definition that will look different based on the grade level and the developmental needs of students at these grade levels. While we know that for K-2 students it is not developmentally appropriate to have them in front of a computer screen from 8am-3pm, we are working with our teachers to find a balance of rigor with screen time. During a live stream there may be a true live stream with the teacher in the classroom, teachers may also show short clips of a

pre-recorded lesson as a supplement (Literacy, Math curriculum demo, etc). Live stream will look different from primary, to intermediate, to middle school.

### **Kindergarten through 2nd grade -**

Teachers will communicate with parents regularly the times that students will need to be online. This time will be split into a morning session and an afternoon session. These times are in addition to the daily co-curricular time that students will need to attend online and will be a part of the daily schedule. This choice is more parent-dependent due to the age of the child.

### **3rd - 5th Grade -**

Students will follow their schedule as assigned from their homeroom teacher. Homeroom teachers will provide a schedule at the beginning of the year so students and families are familiar with expectations. Students at home would not be required to stay online during times such as recess and lunch, and may also have times where a class is independently working and may not need to be in an online setting. A typical student schedule for the student does include 45-minute classes with each teacher Monday thru Friday, and a student at home would be required to check in with the teacher to be counted for attendance in each class. The student would still be expected to complete the in-class work and homework assigned. Students will be expected to be online during their normally scheduled co-curricular time each day.

### **Middle School -**

Middle school students would be expected to be available online for the school day of 8 a.m. to 3 p.m. and follow the in-person student schedule. Students at home would not be required to stay online during times such as recess and lunch, and may also have times where a class is independently working and not needed to be in an online setting. These times would be directed by the teacher who is teaching the class the student would be currently with. A typical student schedule for the student does include 45-minute classes with each teacher Monday thru Friday, and a student at home would be required to check in with the teacher to be counted for attendance at each class. The student would still be expected to complete the in-class and homework assigned by each teacher and participate within class discussions. The way that homework and classwork would be monitored and turned in does depend on the teacher, however, Google Classroom and the Google suite would be used for these purposes as well as other online programs as determined by the teacher. Students at home can expect to also have one-on-one conferences with the teachers and participate in smaller group settings as well.

## **Changing Plans**

St. Gabriel the Archangel remains committed to a safe, flexible, enriching learning environment together. In consultation with the St. Louis City Department of Health and the Archdiocese of St. Louis, St. Gabriel will prepare to exercise its flexibility to move between our three color plans. This will be dictated by the recommendations for the protection of the health and safety of our students, teachers and staff. Our goal is to have students learn at school when health and safety guidelines allow it. We are committed to keeping all families informed should there need to be a change in colors of our plan.

## **Pandemic Related School Supplies for Every Student:**

Below is a list of some additional supplies that the students will be asked to provide and have on hand during the course of the day when they are at school.

- Two extra face masks at all times (labeled) on the chance they need to switch one out.
- Labeled baggie to hold extra face masks (First and last name please)
- Refillable water bottle (Water fountains will not be open, only bottle fillers.)

**Optional Items:** Lanyard to hold face mask when off for breaks and meals, face shield (does not take the place of a mask), small bottle of unscented hand sanitizer to keep at desk or backpack that can be refilled.

## Every Child Everyday

### Well Rounded

St. Gabriel the Archangel School seeks to provide excellence in elementary education (K-8). As part of St. Gabriel the Archangel Parish, we strive to enrich our students spiritually and academically so they will be, like our patron saint, messengers of the Good News wherever they go.

### Faith Formation

Students will be attending Mass in-person (one homeroom at a time for social distancing purposes and will increase as safety permits), participating in live streaming of daily Mass, or participating in prayer services weekly) along with their regular religion studies.

### Closing the Learning Gap

The spring of 2020 presented a unique and unprecedented challenge to learning and teaching. Teachers have worked to identify standards that need to be reinforced this fall. Learning needs will be identified through formative and summative assessments - especially through our new math and literacy programs. We hope to:

- Re-engage students who may have fallen behind during distance learning in the spring.
- Identify struggling students,
- Support teachers and parents

This approach can work with in-person learning, as well as live stream. Our learning consultant, school counselor, homeroom teachers, instructional assistants, and administration are developing plans to meet the needs of students, whatever they may need. Some students may need concepts reinforced while others may be ready for a challenge.

## Beyond the Bell

### Aftercare




Sr. Ann Francis is determining what a safe and viable option might look like.

### Technology

St. Gabriel the Archangel School will have Chromebooks for 3rd through 8th grade students to check out should a family choose a live stream approach, or if we have to transition to yellow or red scenarios in our plans for the school year. iPads have been ordered for Kindergarten through 2nd grade. We anticipate their arrival before school starts, but we have extra Chromebooks should the devices not be set up in time. Teachers will share expectations on proper usage and functionality of the apps that are going to be utilized in the classroom and at home. Families may also utilize a device at home if they would rather use one of their own. Families will have an Acceptable Use Policy to sign and return to school before any technology is passed out for the 2020-2021 school year.

## Digital Platforms

Our staff will utilize a variety of digital platforms to communicate with the students. Teachers will be communicating with the students and parents in regards to which platforms they will use in their classroom.

 Google Classroom	<p>Classroom is a free web-based platform that integrates your G Suite for Education account with all your G Suite services, including Google Docs, Gmail, and Google Calendar. Classroom saves time and paper, and makes it easy to create classes, distribute assignments, communicate, and stay organized.</p> <p>Teachers can quickly see who has or hasn't completed the work, and provide direct, real-time feedback and grades right in Classroom.</p>
 Google Meet	<p>Google Meet is a virtual meeting platform that allows dozens of people to join the same meeting and speak or share video with each other. This is secure through the Google Apps for Education that the St. Gabriel Community has in place.</p>
	<p>Seesaw is a platform for student engagement. Teachers can empower students to create, reflect, share, and collaborate. Students “show what they know” using photos, videos, drawings, text, PDFs, and links. It’s simple to get student work in one place and share with families, and nothing is shared without teacher approval.</p>
	<p>Owl Labs is a camera that will allow students to live stream into the classroom and feel part of the class as if they are right there in the action. Owl Cameras have been ordered and will be piloted in various classrooms. Other classrooms will use computer cameras to allow students to remote in.</p>



# COMMITTEE MEMBERS



Barb Belcher- Teacher  
Sr. Gail Buckman- Teacher  
Kristin Busch- Parent  
Melissa Ciegel- Parent/School Nurse  
Maria Craft- Parent/Board of Ed.  
Debbe DaLay- Coordinator of Religious Ed.  
Robyn Doenges- Parent/ Teacher  
Laurie Evans- Teacher  
Jill Farace- Cafeteria Manager  
Elaine Favazza- Learning Consultant  
Dave Hahn- Parent/Board of Ed.  
Dr. Jenny Heithaus- Parent/ Physician-Developmental  
Behavioral Pediatrics/Board of Ed.  
Dr. Karrie Hohn- Parent, Family Medicine Physician  
Bryan Jones- Teacher  
Michelle Keim- Counselor  
Andrea LaPosha- Teacher  
Fr. Mark Madden- Clergy  
Tonya McEnery- Principal  
Elizabeth Mitchell- Teacher  
Tom Oldenburg- Parent/Alderman  
Anne Pingel- Director of Technology  
Mike Pingel- Maintenance  
Jennifer Pollihan- Teacher  
Megan Potts- Teacher  
Jennifer Ronshausen - Teacher  
Jenn Schmitt- Teacher  
Msgr. Shamleffer- Pastor  
Dr. David Sonderman- Parent, Pediatrician  
Dr. Dan Winkeler- Assistant Principal

## Appendix A

[Return to School: COVID-19 Scenarios](#)

## Appendix B

[CDC Information](#)

## Return to School: COVID-19 Scenarios

This document is based on the latest CDC and local health department guidance. It will be revised whenever new or updated guidelines are published. Last updated: 8-5-2020.

Definitions for terms used below:

- **Confirmed Case:** An individual who has tested + for COVID-19 by molecular testing.
- **Symptomatic with Pending Test Result:** An individual with symptoms consistent with COVID-19, but still waiting for a COVID-19 test result.
- **Close Contact:** An individual who has had direct contact with another individual with COVID-19, defined as within 6 feet for at least 15 minutes, without wearing a face covering, and during the individual's infectious period (starting 48 hours before onset of symptoms and lasting until 10 days after onset of symptoms).

### A) Student is confirmed case or symptomatic with pending test result or a close contact.

#### 1. A student is confirmed to have COVID-19.

1. The student and all siblings of the student are immediately excluded from school.
2. The confirmed positive student is allowed to return to school once meeting the following criteria:
  1. Fever-free for at least 24 hours without the use of fever-reducing medications, AND
  2. Other symptoms have improved, AND
  3. At least 10 days have passed since the onset of symptoms, AND
  4. Clearance is provided by primary medical provider (STL City residents) or by local health department (STL County residents).
- c. Siblings of the student are quarantined at home for 14 days, starting with the last potential exposure. The last potential exposure to an infected sibling is 10 days after the sibling's onset of symptoms or 10 days after the sibling's test result (if the sibling remains asymptomatic).
- d. Students and staff members who are confirmed to be close contacts to the positive student are quarantined at home for 14 days, starting with the last potential exposure (see scenario A4 and C4, respectively).

#### 2. A student is symptomatic with pending test result for COVID-19, WITHOUT a known close exposure to COVID-19.

- a. The student is excluded from school pending the result of the test.
  - i. If positive, see scenario A1.
  - ii. If negative, the student must be fever-free for at least 24 hours with other symptoms improving prior to returning to school.
  - iii. Siblings, classmates, and teachers of pending case should be monitored for symptoms while waiting for the test result, but can remain at school if not having symptoms.

#### 3. A student is symptomatic with pending test result for COVID-19, WITH a known close exposure to COVID-19.

- a. Ideally, the student had already started a 14-day quarantine at home following this known close exposure and was not symptomatic at school.
- b. Regardless of the test result, the student is allowed to return to school once meeting the following criteria (due to the possibility of a false-negative result):
  - i. Fever-free for at least 24 hours without the use of fever-reducing medications, AND
  - ii. Other symptoms are improving, AND
  - iii. At least 10 days have passed since the onset of symptoms.

4. A student is a close contact to a known COVID-19 case.
  - a. The student is excluded for 14 days after the last contact to a known case.
  - b. If the student develops symptoms, see scenario A3.
  - c. Siblings, classmates, and staff in close contact with the student should be monitored for symptoms, but can remain at school if not having symptoms.

**B) Parent of a student is confirmed case or symptomatic with pending test result or a close contact.**

1. Parent of a student is confirmed to have COVID-19.
  1. Children who are close contacts of the parent are quarantined at home for 14 days, starting with the last potential exposure. The last potential exposure to an infected parent is 10 days after the parent's onset of symptoms or 10 days after the parent's test result (if the parent remains asymptomatic).
2. Parent of a student is symptomatic with pending test result.
  - a. Student is excluded from school until parent's test result is known.
    - i. If parent is positive, see scenario B1.
    - ii. If parent is negative, student can return to school.
3. Parent of a student is a close contact to a known COVID-19 case.
  - a. Student should be monitored for symptoms, but can remain at school. If symptoms develop in the parent, see scenario B2.

**C) Staff member is confirmed case or symptomatic with pending test result or a close contact.**

1. Staff member is confirmed to have COVID-19.
  1. Staff member is immediately excluded from school.
  2. Staff member is allowed to return to school once meeting the following criteria:
    1. Fever-free for at least 24 hours without the use of fever-reducing medications, AND
    2. Other symptoms are improving, AND
    3. At least 10 days have passed since symptom onset, AND
    4. Clearance is provided by primary care provider (STL City residents) or by local health department (STL County residents).
- c. Students and staff members who are confirmed to be close contacts to the positive staff member are quarantined at home for 14 days, starting with the last potential exposure (see scenario A4 and C4, respectively).
2. Staff member is symptomatic with pending test result, WITHOUT a known close exposure to COVID-19.
  - a. Staff member is excluded from school pending the result of the test.
    - i. If positive, see scenario C1.
    - ii. If negative, the staff member must be fever-free for at least 24 hours with other symptoms improving prior to returning to school.
    - iii. Students and other staff members who are close contacts should be monitored for symptoms while waiting for the test result, but can remain at school if not having symptoms.
3. Staff member is symptomatic with pending test result, WITH a known close exposure to COVID-19.

- a. Ideally, the staff member had already started a 14-day quarantine at home following this known close exposure and was not symptomatic at school.
  - b. Regardless of the test result, the staff member is only allowed to return to school once meeting the following criteria (due to the possibility of a false-negative result):
    - i. Fever-free for at least 24 hours without the use of fever-reducing medications, AND
    - ii. Other symptoms are improving, AND
    - iii. At least 10 days have passed since the onset of symptoms.
- 
- 4. Staff member is a close contact to a known COVID-19 case.
    - a. Staff member is excluded for 14 days after the last contact to a known case.
    - b. If the staff member develops symptoms, see scenario C3.
    - c. Students and other staff members in close contact with the staff member should be monitored for symptoms but can remain at school if not having symptoms.

## Appendix B

<https://www.cdc.gov/coronavirus/2019-ncov/your-health/index.html>